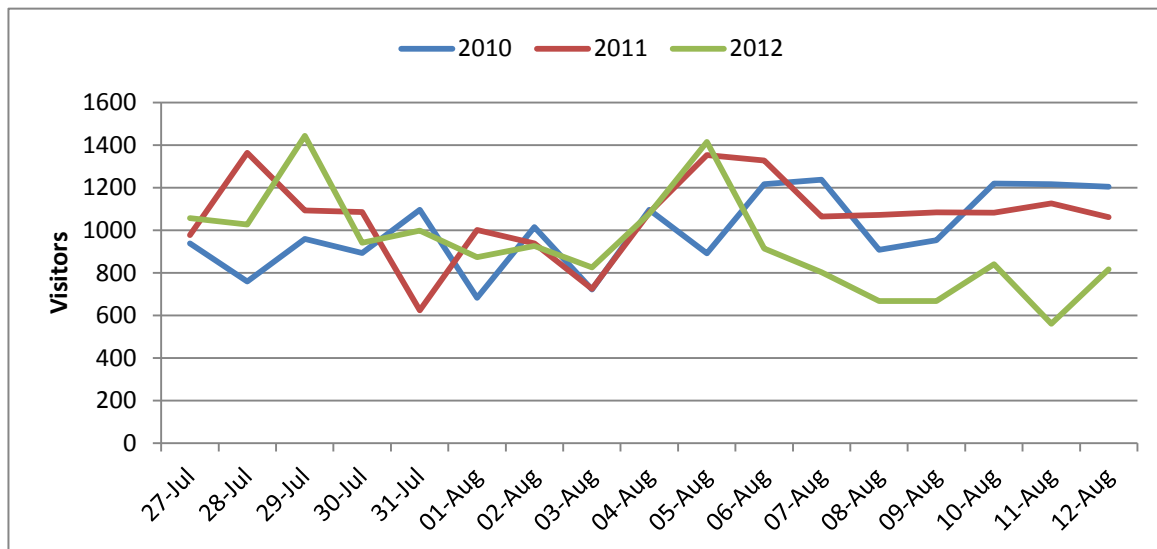


**APPENDIX 1:  
Footfall at the CIC during the Olympic and Paralympic Games**

**OLYMPICS**

Dates	2010	2011	2012	Extended hours			Total
				First 1.5 hour	Last 2.5 hours	Total	
27-Jul	939	977	1057	9	81	90	
28-Jul	759	1364	1027	34	64	98	
29-Jul	959	1094	1444	8	63	71	
30-Jul	893	1086	942	2	81	83	
31-Jul	1096	624	999	8	63	71	
01-Aug	683	1001	874	8	76	84	
02-Aug	1015	939	927	10	97	107	
03-Aug	722	724	826	20	71	91	
04-Aug	1097	1083	1079	1	106	107	
05-Aug	892	1353	1415	9	82	90	
06-Aug	1217	1328	915	10	83	93	
07-Aug	1238	1065	803	15	80	94	
08-Aug	908	1072	667	3	35	38	
09-Aug	954	1085	667	10	60	70	
10-Aug	1219	1083	841	0	92	92	
11-Aug	1217	1126	561	5	68	73	Visitors within normal opening hours
12-Aug	1204	1062	817	3	93	96	
<b>Total</b>	<b>17012</b>	<b>18066</b>	<b>15861</b>	<b>153</b>	<b>1291</b>	<b>1444</b>	<b>14418</b>

	Weekends
	First hour from 08:00 to 09:30
	Last 2.5 hours from 17:30 to 20:00



During the **Olympic period** (27 July to 12 August) the CIC recorded 15,861 visitors. This figure includes 1,444 visitors welcomed in the extended opening hours (1 hour extra in the morning and 2.5 hours extra in the evening).

**With extended hours:**

2012's figures are 12.2% less than 2011 and 6.8% less than 2010

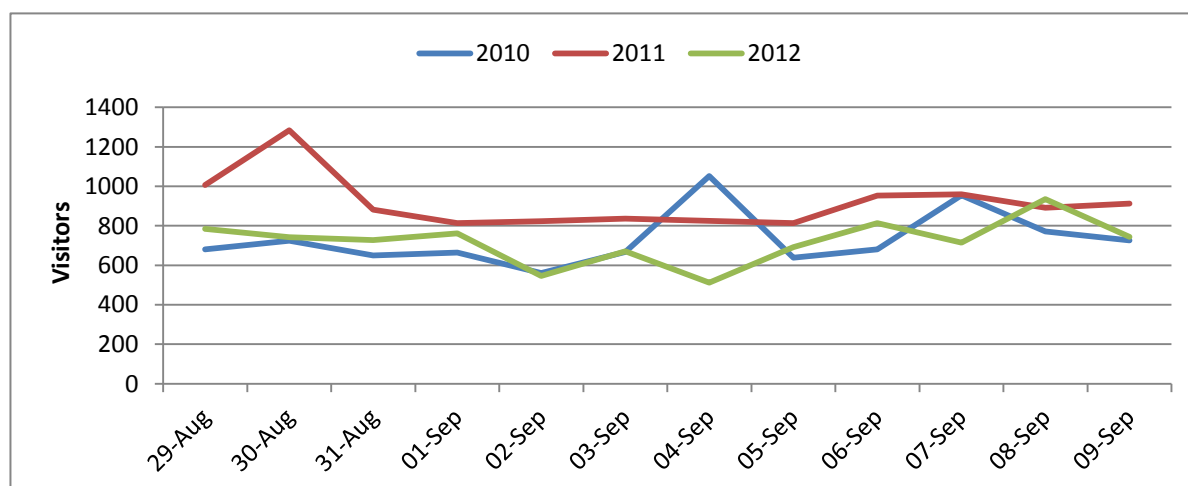
**Without extended hours:**

In 2012 the CIC recorded 14,418 visitors, which is 20.2% less than 2011 and 15.3% less than 2010.

## PARALYMPICS

Dates	2010	2011	2012	Extended hours			Total
				First 0.5 hour	Last 2.5 hours	Total	
29-Aug	681	1006	784	22	69	90	
30-Aug	725	1284	742	37	46	82	
31-Aug	650	881	728	55	38	92	
01-Sep	665	813	761	10	95	104	
02-Sep	560	823	546	46	49	95	
03-Sep	667	836	670	17	65	82	
04-Sep	1052	825	512	23	33	56	
05-Sep	639	814	692	14	79	93	
06-Sep	680	953	814	30	24	53	
07-Sep	955	959	715	12	70	82	Visitors within normal opening hours
08-Sep	772	892	935	11	100	111	
09-Sep	726	912	744	19	68	87	
<b>Total</b>	<b>8772</b>	<b>10998</b>	<b>8643</b>	<b>294</b>	<b>734</b>	<b>1027</b>	<b>7616</b>

	weekends
	First half hour from 09:00 to 09:30
	Last 2.5 hours from 17:30 to 20:00



Due to the low number of visitors in the first hour during the Olympic period, the opening time for the **Paralympics** (29 August- 09 September) was changed from 8am to 9am. The CIC had 8,643 visitors coming through its doors in this period. This includes 1,027 visitors during the extended hours (0.5 hour in the mornings and 2.5 hours in the evenings).

***With extended hours:***

2012's figures are 21.4% less than 2011 and 1.5% less than 2010

***Without extended hours:***

In 2012 the CIC recorded 7,616 visitors, which is 30.8% less than 2011 and 13.2% less than 2010.

